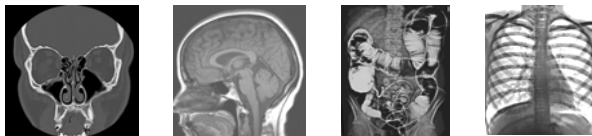


## APPLICATION REQUIREMENTS

Please refer to the website for most current admission requirements

- Completed & Signed Application form
- Completed Performance Standards form
- High school diploma or equivalent
- Transcripts of all previous academic experiences to include high school, college, and/or technical schools.
- American College Testing (ACT) or Scholastic Aptitude Testing (SAT) scores are required. Exam scores must be recent (10 years or less). **The minimum required for admission consideration is an ACT composite score of 19 or an SAT (Critical Reading + Math) score of 900.** The ACT or SAT Writing component is not required or included. Applicants with a baccalaureate degree or higher may be exempt from this requirement. The ACT school code is 4549. The SAT school code is 3863.
- Satisfactory completion of 15 credit hours of post-secondary (college level) coursework which must include at least one course in Mathematics and one in Written / Oral Communications. College coursework can be completed as a prerequisite or co-requisite. See website for specifics.
- Satisfactory completion of two courses of high school or college level mathematics to include Algebra I plus one of the following: Geometry, Algebra II, and/or Trigonometry.
- Satisfactory completion of three courses of high school or college level science (Biology, Physics, Chemistry, Human anatomy, Physiology, etc)
- Three letters of personal reference

A new class of students will be accepted to begin in July of each year. Applications and all related materials **must be received by February 1st** in order for the candidate to be considered for the next enrollment period. Applicants who have completed all requirements will be screened by the Admissions committee prior to being granted a personal interview. The screening mechanism is based upon ACT/SAT scores and academic transcripts.



## APPLICATION REQUIREMENTS cont.

Applicants selected for an interview will be notified in late February or early March. In early April, the selection process will be completed and all interviewed applicants will be notified of their standing.

Selection is based upon academic qualifications, personal interview, previous health care and/ or work experience, and the individual's projected ability to make a significant contribution to the profession of Radiologic Technology.

West Virginia University Hospitals consider each applicant for admission without regard to age, sex, race, color, religion, ancestry, national origin, handicap, or veteran status.

## ENROLLMENT

Eighteen (18) students are selected for the July class. Four (4) applicants will be wait-listed according to their placement in the program's objective ranking mechanism and will be notified if a position becomes available prior to the July 1st start date. In all cases, applicants that do not receive an offer for a position must reapply if they wish to attempt to gain admission in subsequent enrollment years.

All **selected** applicants will be required to

1. Sign an "Intent to Enroll" form & submit a \$50 nonrefundable admissions fee.
2. Have a complete health /physical exam conducted by your personal physician.
3. Complete appropriate paperwork and be screened for past criminal behavior as a condition of enrollment.

*Inquiries should be directed to:*

**Education Coordinator**

**Radiologic Technology Education Programs**

**West Virginia University Hospitals**

**Box 8062**

**Morgantown, WV 26506-8062**

**(304) 598-4251 or**

**(304) 598-4000 extension 73140, 73129, or 72525**

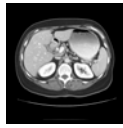
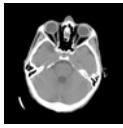


# West Virginia University Hospitals

## Radiologic Technology Education Programs

# RADIOGRAPHY

[www.wvuhradtech.com](http://www.wvuhradtech.com)



## GENERAL DESCRIPTION

The program in Radiologic Technology consists of 24 months of clinical and classroom instruction of approximately 38 hours per week.

Classes start in July of each year and consist of an integrated curriculum of didactic and clinical education in the various areas of the Radiology Department.

Clinical assignments require students to participate in occasional evening clinical rotations. Clinical rotations are arranged so that students receive valuable experience in all aspects of diagnostic imaging to include routine, trauma, mobile, and operating room radiography.

## COURSES

- Mathematics for Radiologic Technology
- Human Structure & Function I, II, & III
- Radiographic Exposure I, II, & III
- Radiographic Positioning & Procedures I & II
- Special Radiographic Procedures
- Image Analysis & Evaluation I & II
- Radiologic Physics I & II
- Advanced Radiologic Physics I & II
- Medical Terminology
- Pathology
- Radiographic Seminar
- Patient Care & Nursing Procedures
- Intro to Radiologic Technology
- Cross-Sectional Anatomy

## MINI-COURSES

- CPR
- Computer Literacy
- Intro to Mammography
- Radiology Management
- Medical Ethics & Law
- Quality Assurance & Quality Control
- Intro to Nuclear Medicine
- Intro to Radiation Therapy
- Intro to Ultrasound
- Operating Room Procedures

## ADMINISTRATION / ACCREDITATION

The program is accredited by the Joint Review Committee on Education in Radiologic Technology\* (JRCERT) and is sponsored by West Virginia University Hospitals. The clinical and didactic education is conducted within the Radiology Department and the WVUH complex. Upon completion of the program, a Certificate of Completion is awarded and the graduate technologist is eligible, pending ARRT approval, to sit for the American Registry of Radiologic Technologists (ARRT) certification examination to qualify as a registered Radiologic Technologist. Although WVU Hospital is located on the West Virginia University campus, the program is a 24 month certificate program, not a degree granting program. Subjects taken do not carry WVU credit, but provisions to transfer course work under the Board of Regents Bachelors of Arts program may be pursued. Students also have the option of pursuing an Associates degree through Fairmont State which can be completed during or after graduation from WVUH's radiography program.



\*Joint Review Committee on Education in Radiologic Technology  
20 North Wacker Drive, Suite 2850 Chicago, IL 60606-3182  
(312) 704-5300 [www.jrcert.org](http://www.jrcert.org)

## STUDENT FEES & TUITION

The tuition for the program is \$1000.00 per semester or \$4000.00 for the entire program. Upon enrollment, a \$50 nonrefundable admission fee is assessed to each student. Each student is responsible for all other personal expenses such as room & board, transportation, graduation fees, and uniforms. No stipends are provided.

## BOOKS

Books may be purchased through the West Virginia University Health Science Center Book Store at an approximate cost of \$600.00 for the two years. Students are provided with an required textbook list upon admission to the program.

## FINANCIAL AID

The program is accredited by the United States Department of Education to participate in their Student Financial Assistance Programs to include Pell Grants, Subsidized & Unsubsidized Stafford loans, and PLUS loans. American Education Services (AES) serves as the loan guarantor for the program. Student eligibility is determined upon admission to the program and after submission of the required financial aid documents. The program's FAFSA School Code is 012573. The Program is also approved for Montgomery GI Bill benefits for eligible enrolled veterans.

## HOUSING

Students are responsible for their own room and board. There are many apartments and mobile homes for rent in the vicinity of the WVU Medical Center. University housing is not available to the student technologist. Upon admission, students are provided with a current rental guide for the Morgantown area to assist them in finding rental properties.

## DRESS CODE

Students are required to wear a designated uniform while in attendance. Uniform requirements (manufacturer & product #'s) are distributed to students upon admission to the program.

## GENERAL INFORMATION

A designated vacation of two weeks and all Hospital recognized holidays will be given to the student technologists each year. Students are required to participate in the West Virginia Society of Radiologic Technologist's Annual Conference.

## NOTE

Pregnant students will be advised to refer to recommendations by the National Council on Radiation Protection concerning reduced maximum permissible radiation dosage to the pregnant worker. The program pregnancy policy is available to all applicants upon request.